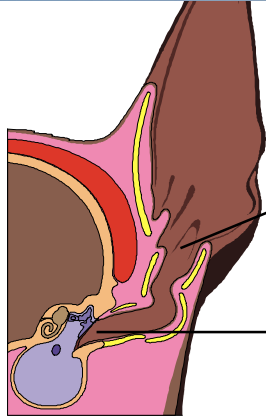
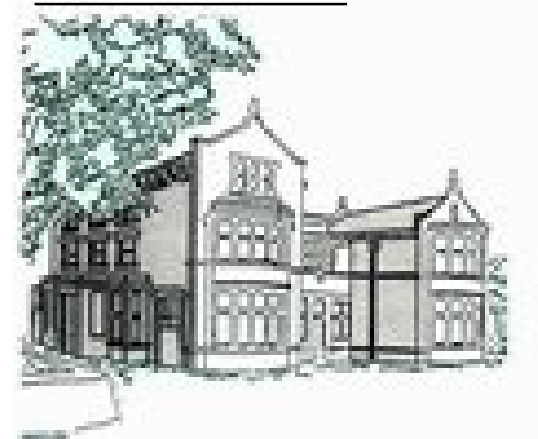


Position of ear to show right angle bend"



Area where drops are placed.

Area of ear canal where mites live.



PARK ISSA VETS

CLIENT FACT SHEET

EAR MITES

TEL: 01691 670067

Fax: 01691 671067

Website: www.parkissa.com



Your complimentary
use period has ended.
Thank you for using
PDF Complete.

[Click Here to upgrade to
Unlimited Pages and Expanded Features](#)

...ting both dogs
...e mites live

Signs to look for

Usually the mites cause intense irritation in the ears which mean your pet will often be seen head-shaking and causing self-inflicted damage to their ear flaps. However occasionally, especially in cats, mite infestations can be tolerated by the animal. Since spread is by direct contact with infected or carrier animals it is easy to see how these animals can effectively spread the condition.

A give away is to look for is the presence of a dark brown waxy discharge visible at the entrance of the ears. This discharge has been described as looking like coffee grounds+.

Diagnosis

This needs to be done by a Vet using an **otoscope**, a device we use for looking deep into ears. With this it is possible to visualise the mites directly. It is important to distinguish mites from other causes of sore ears such as foreign bodies or bacterial infection which obviously require different treatment.

Treatment

The most effective treatment is to use ear drops directly into both ears of any affected pets. The drops we recommend are **"Canaural"** These need to be applied to both ears once or twice daily for 7 consecutive days, repeating this after a weeks break. In essence a three week course of treatment.

This is necessary due to the parasites complicated lifecycle.

Common reasons for treatment failure.

1. The drops need to be instilled correctly, deep into the ear canal and then massaged in. Not always easy. these ears are sore! See the illustration overleaf.
2. Multi-animal households. Repeated flare-ups of ear mites can be due to mites being passed round from pet to pet. It makes more sense to treat **all** animals in the house initially.

Prevention

An anti-flea spot-on preparation **"Advocate"** is an effective preventative measure against ear mites. It can also be used as a treatment in cats or dogs difficult to administer drops to.