

SESSION.

DAY 2- Repeat as above and place a small amount of your pet's toothpaste on the end of your finger and let your pet taste it.

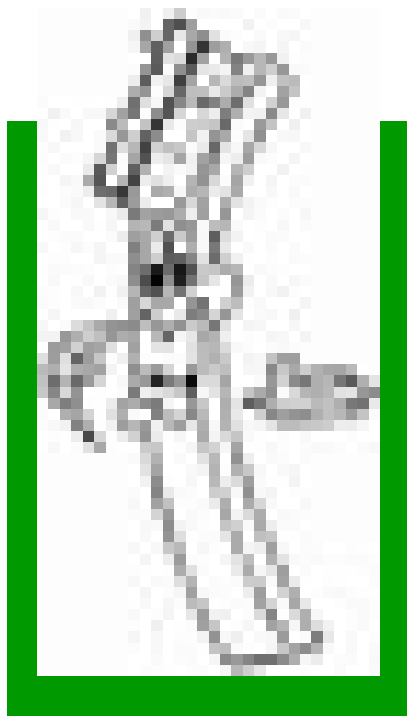
DAY 3- Repeat day 2 but, this time gently run your finger or finger toothbrush and a small amount of toothpaste over your pet's teeth for 30-45 seconds. Reward your pet with praise and a treat.

DAY 4- Repeat as day 2 adding 15 seconds on to the time you run your finger/finger brush and toothpaste over your pet's teeth. Always reward with a treat and praise.

DAY 5- If all is going well, run your finger over the teeth for 30 seconds and then gently insert a pet toothbrush and run over the teeth for 30 seconds.

DAY 6- Repeat as day 5, but increase the time by 30 seconds.

DAY 7- By now you should be aiming to spend at least one minute on each side of the mouth with a full size pet toothbrush and toothpaste.



Please ask at reception for a free pet dental clinic with one of our nurses

PARK ISSA VETERINARY HOSPITAL

PARK ISSA VETERINARY HOSPITAL

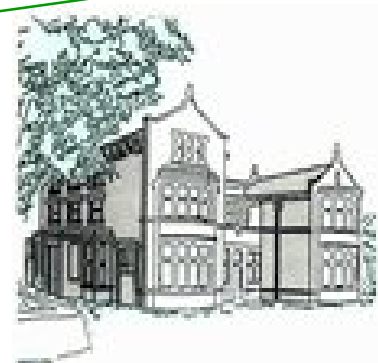
Salop Road
Oswestry
Shropshire
SY11 2RL

Phone: 01691 670067

Fax: 01691 671067

Email: vets@parkissa.com

PARK ISSA VETERINARY HOSPITAL



PEARLY WHITES

A LEAFLET FOR HOME DENTAL CARE

HEALTHY TEETH MEANS HAPPY PETS!

“Where Caring And Compassion Come First”

Tel: 01691 670067

with the process of care your pet will resist

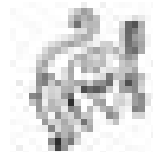
- **ALWAYS PRAISE**– It's a new experience for you and your pet. Praising your pet will make them more approachable
- **REMEMBER**– To always put a small amount of animal toothpaste on your finger or toothbrush. Your pet will like the taste and will associate it, the praise and the treats with tooth brushing
- **REWARD**– Always reward your pet with treats at the end of each session.
- **TOOTH BRUSHING SHOULD BE FUN!**
- **STOP**– If there is any sign of aggression stop immediately and seek further advice from your vet
- **HUMAN TOOTHPASTE**– Is for humans and not pets. It is high in fluoride and can cause stomach upsets in pets



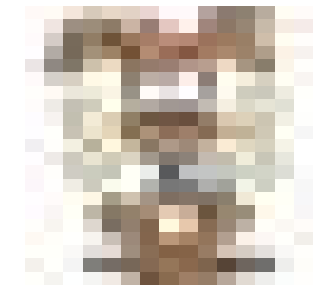
Diet can be a major factor in the development of plaque and tartar. Dry food, biscuits and abrasive food can aid in the removal of plaque.

On the other hand wet and canned foods may contribute to plaque build up and subsequent periodontal disease

- Special dental chews are available from the surgery and can be used in addition to tooth brushing. They can also be useful in cases where puts are unwilling to allow tooth brushing.
- Always make sure the daily allowance of food at meal times are decreased to compensate for dental chews, to help reduce the risk of obesity, leading to further health complications



Its is best to start brushing your puppy or kittens teeth between 8-12 weeks of age, but it is **NEVER** too late to start even when your pet is older



Regular tooth brushing at home, to remove plaque, will prevent the start of periodontal disease, therefore reducing the risk of your pet having to have an anaesthetic to scale and polish his/her teeth.

Available from the surgery:

- Finger brushes to help you and your pet to get started.
- Toothbrushes designed especially for your pet.
- Flavoured toothpastes that will appeal to your pet.
- A range of dental diets and treats to help with dental care.